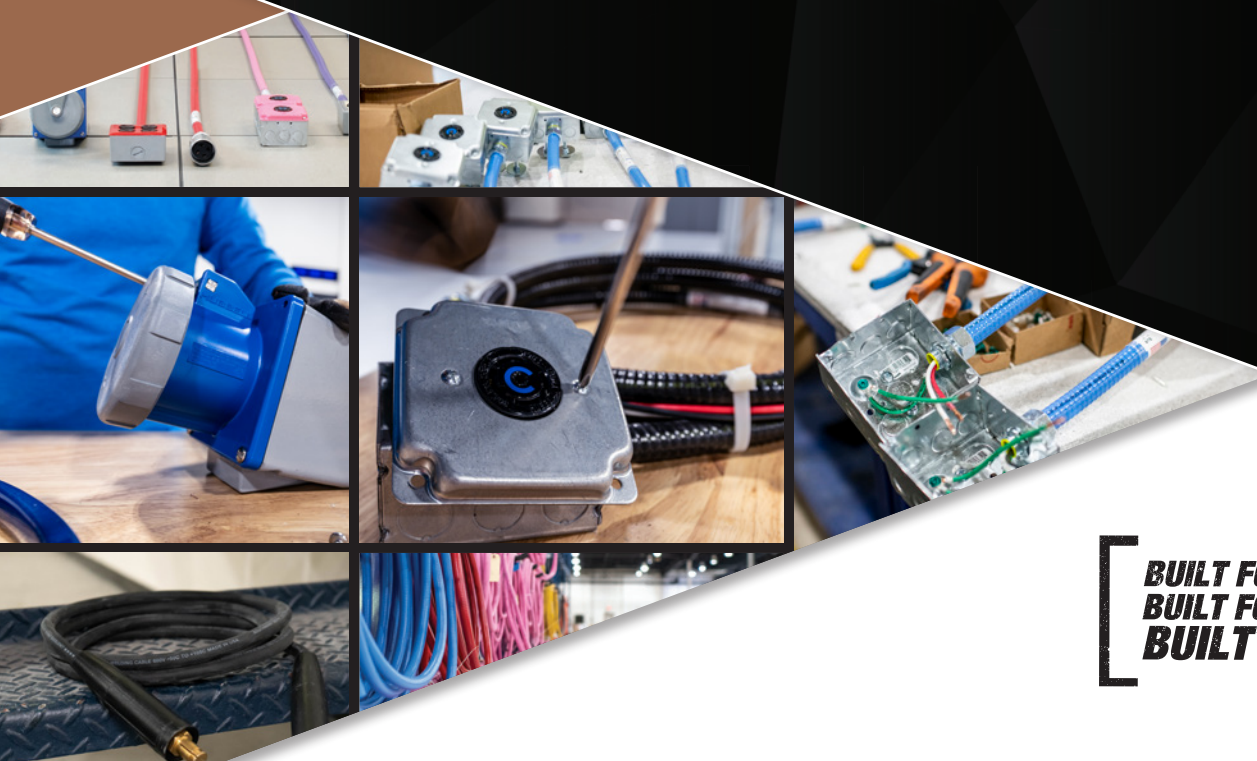




Southwire®

QWIK WHIP™ CABLING SOLUTIONS DATA CENTERS



**BUILT FOR DURABILITY.
BUILT FOR RELIABILITY.
BUILT FOR WORK.™**

SOUTHWIRE.COM

SOUTHWIRE® QWIK WHIP™ CABLING SOLUTIONS

CERTIFIED CUSTOM POWER CABLES FOR MISSION-CRITICAL APPLICATIONS
BUILT AND TESTED FOR RELIABILITY

With rapid turnaround times and an unmatched selection of receptacle configurations, colors, and lengths, we tailor every cable to your exact specifications. Our solutions help keep your project on schedule and within budget, with rigorously tested cable assemblies arriving at your dock ready for immediate installation. Every cable meets stringent quality standards, ensuring dependable operation in your data center facility.

WE USE THE HIGHEST QUALITY COMPONENTS IN THE INDUSTRY

MULTIPLE CABLE OPTIONS

- SOOW
- Tray Cable
- Southwire Machine FLEX® Tray
(for overhead whips installed in cable tray)
- SJOW
- Type W

MULTIPLE CONDUIT OPTIONS

- Flexible Metal Conduit
- MC
- Metallic Liquid Tight
- Non-Metallic Liquid Tight



WIRING DEVICES

NEMA Rated
Pin and Sleeve (Hubbell®, Leviton® etc.)
CA Standard
Russell Stoll
Non-NEMA
Modular Connectors
125-175A (Hubbell PowerGain™)

CONDUCTOR SIZES

- 12 AWG - 3/0 AWG
- THHN – All sizes
- Color Options



FITTING OPTIONS

- Straight and angled
- Cord grips

HIGH POWER OPTIONS AVAILABLE

60A, 100A, 125A, and the corresponding gauge sizes of cable

PIG TAIL OR WIRING DEVICE

Customized lengths



Southwire Machine FLEX®

CABLING SOLUTIONS

CUSTOM CABLE LABELING

We attach a custom identification label referencing PDU, Panel, Circuit Number, Equipment, Receptacle, Length, and UL Certification to each cable end for easy identification. These labels are secured in place with protective heat shrink. We also offer face-plate labeling.

ADDITIONAL CAPABILITIES

- Custom connectors
- Bus drops (cord)
- Cable Tray Grounding Kits

COMPLETE YOUR CIRCUIT

With our depth of inventory in RPP and PDU breakers, we can kit your circuit breakers with each whip.



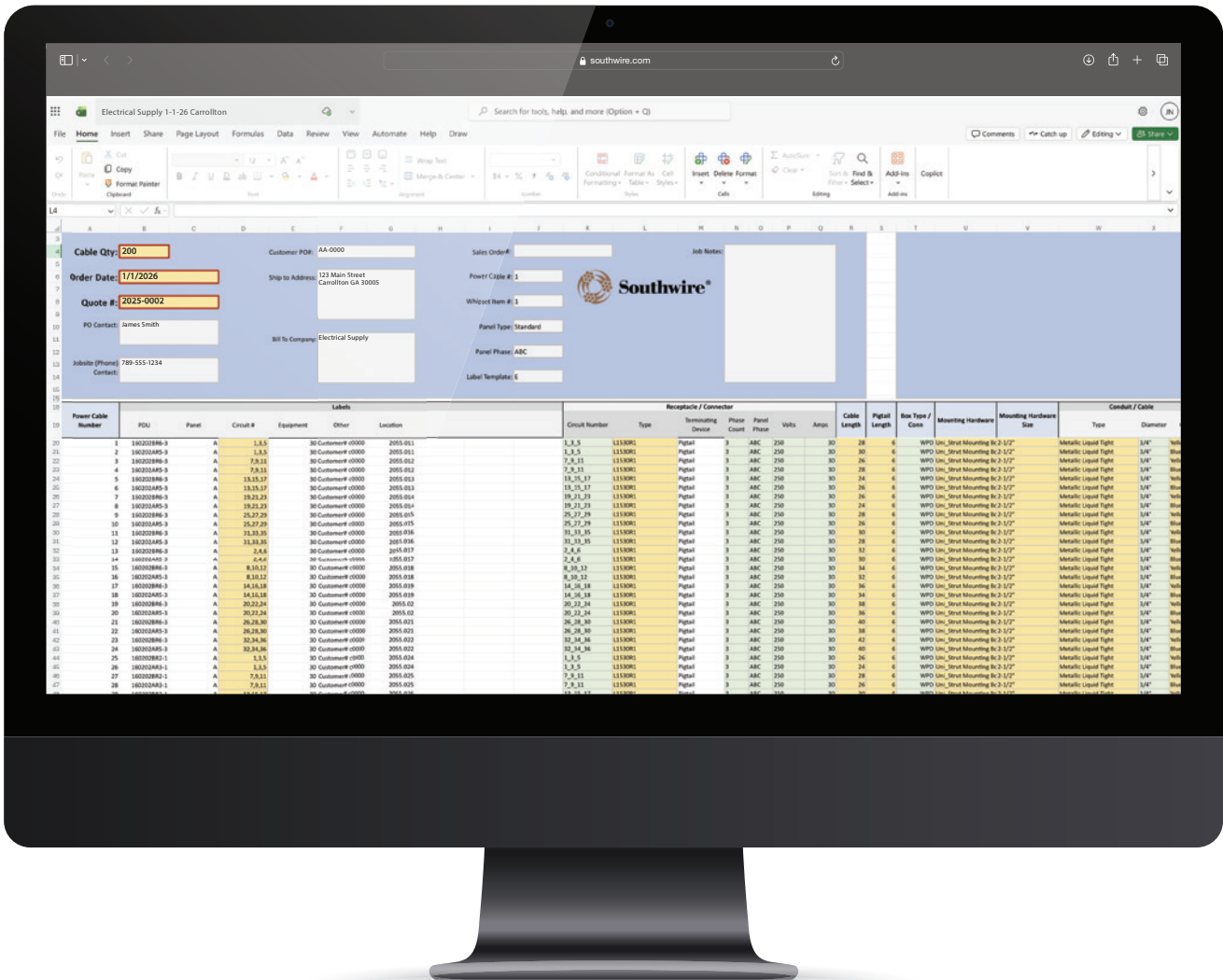
COMMITMENT TO CUSTOMER SATISFACTION

Every cable assembly is backed by a limited lifetime warranty and replacement guarantee, ensuring quality workmanship and protection against manufacturing defects for long-term reliability.



SIMPLE AND PRECISE ORDERING

Ordering customized power cables is easy with our user-friendly Excel-based Southwire Cable Builder, designed specifically for custom cabling solution orders. Keep panel boards properly phased by utilizing the one-click phasing process. After adding circuit numbers within the cable builder, simply click either “Standard” or “Vertical” for your panel boards. The Southwire Cable Builder automatically identifies the proper phasing.



CABLING SOLUTIONS

COMPREHENSIVE PRE-TESTING & UL CERTIFICATION

UL LISTED specifically for mission-critical data center environments. Manufactured with all UL Listed components as a complete UL Listed Wire Assembly.

HIPOT TESTING at twice-rated circuit voltage, plus 1000 Volts, to ensure there will be no arcing or shorting of any conductor within the cable.

CONTINUITY TESTING verifies accurate wiring and phase rotation. Every power whip is 100% factory tested through our proprietary automated testing process.

PHASE ROTATION TESTING ensures each conductor is correctly wired to its designated terminal. In addition to UL-required procedures, Southwire performs an extra continuity check on every conductor to validate proper wiring and adherence to color codes for system compatibility and performance.

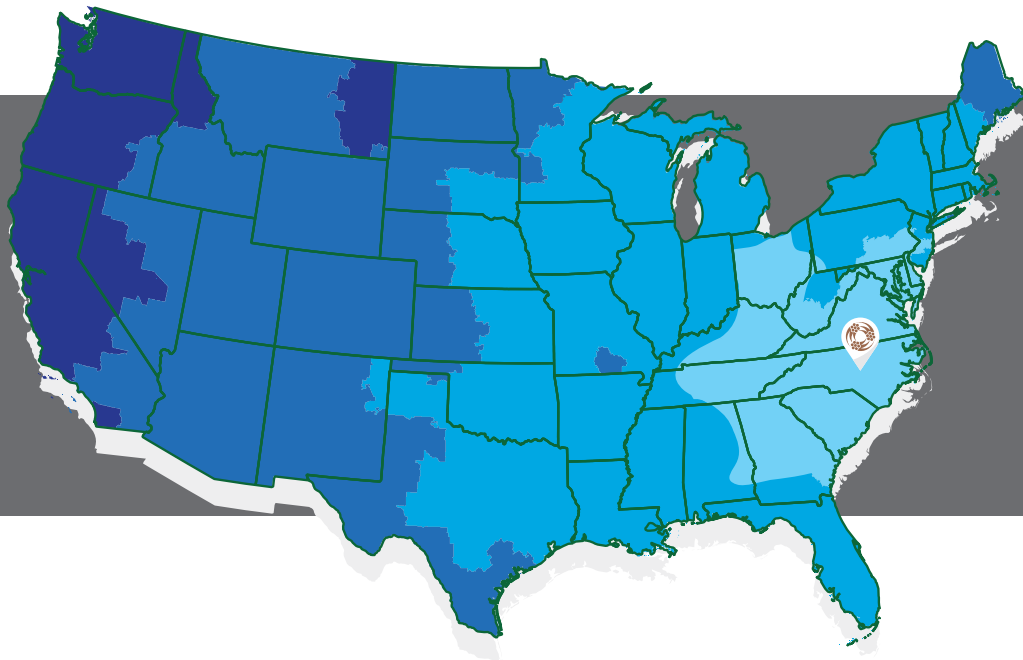
INSULATION LEAKAGE TESTING verifies the integrity of the cable's insulation, ensuring minimal leakage through the wire sheathing. It also detects any damage that could lead to arcing between conductors or to ground—preventing potential circuit trips and promoting safe operation.

SOUTHWIRE® QWIK WHIP™ CABLING SOLUTIONS do not require securing or support every 4.5 feet (as permitted by NEC Article 645.5), allowing for more flexible and efficient power distribution.



PACKAGING & SHIPPING

Cables are sorted by customer preference – PDU, Location, or Device Type – and coiled into sturdy fiber drums for safe shipment. Each drum is labeled with its exact contents, ensuring efficient jobsite location identification. We have standard next day service to many large metro markets on the East coast. Standard service for the rest of the U.S. is 2-4 days, with expedited shipping upon request.



TRANSIT TIME

- 1 Day
- 2 Days
- 3 Days
- 4 Days

CUSTOMER CARE

Our team of sales engineers and technicians boasts decades of experience in the field of electrical and power cable assemblies. We provide you access to a wealth of knowledge that encompasses every aspect of your power cable needs – from the common to the complex.



**EXCEPTIONAL
QUALITY**



**CUSTOMIZED
SOLUTIONS**

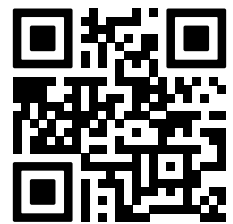


**QUICK
ASSEMBLY**



**FAST
DELIVERY**

VISIT OUR WEBSITE & ORDER



QUESTIONS? CONTACT US:
CablingSolutions@Southwire.com



Southwire[®]

QWIK WHIP[™]
CABLING SOLUTIONS
DATA CENTERS

get social with us:



/SOUTHWIRETOOLS



/SOUTHWIRE-COMPANY



@SOUTHWIRETOOLS



@SOUTHWIRE



SCAN TO LEARN MORE

WWW.SOUTHWIRE.COM | (877) 326-0001

©2026 Southwire Company, LLC. All rights reserved.
*Registered Trademark & [™]Trademark of Southwire Company, LLC.
Hubbell® is a registered trademark of Hubbell Inc.
Leviton® is a registered trademark of Leviton Manufacturing Co., Inc.